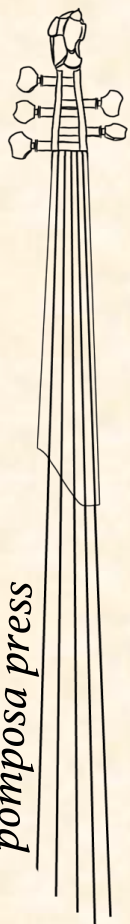


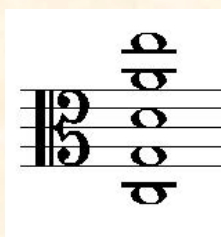
J.S. BACH

SUITE VI, BWV 1012

**TRANSCRIBED FOR
5-STRING VIOLA BY
RUDOLF HAKEN**



pomposa press



©2017 Pomposa Press

Prélude - tempo ad lib

3 0 3 3 0 1 3 0 0 3 0 2 3 0 3 3 0 1 3 0 0 3 0 0 3 0 0 4 1

f *p* *f*

13

p *pp* *lento, esitando*

22

accel.

25

f *fp*

28

in tempo

f *p* *f* *p*

32

pp

36

f *fp* *f* *simile*

40

p *f* *p* *f*

44

p *f* *p* *f* *p*

48

pp *f* *plaintive*

52

55

pp *mf*

58

pp *mf* *pp* *mf*

61

f *fp* *f*

65

fp *f* *fp* *f*

69

fp *f* *p* *f*

73

p *f*

77

77-80: Bass clef, treble clef. Dynamics: *p*, *f*, *p*, *f*.

81

81-84: Treble clef. Dynamics: *p*, *f*, *p*, *f*.

85

85-88: Treble clef. Dynamics: *p*, *f*. Markings: *allarg.*, *A*, *A*. Fingerings: 2, 4, 0, 3, 0, 3, 0, 3.

89

89-92: Treble clef. Dynamics: *fff*. Markings: *lento rubato*, *allarg.*, *A*, *A*, *A*, *E*. Fingerings: 0, 3, 4, 4, 2, 1, 4, 3, 4, 2, 3, 3, 3.

93

93-96: Treble clef. Dynamics: *f*.

97

97-99: Treble clef. Dynamics: *f*. Markings: *accel.*, *E*. Fingerings: 1, 2, 3, 4.

100

100-101: Treble clef. Dynamics: *f*, *p*. Markings: *vivo ten.*, *pont.*

102

102-104: Treble clef, bass clef. Dynamics: *f*, *p*, *norm.*. Markings: *ten.*, *pont.*, *norm.*

104

107

112

115

117

120

123

127

131 *pp* *mf*

136 *mp* *mf* *f*

141 *p sub.* *mp*

146

151 *f*

156 *p* *mp*

162 *pp* *mp hope* *pp*

168 *doubt* *pp* *despair* *p pleading* *f* *ten.* *p*

173 *ten.*
f p

179 *ten.*
mf pp mf

184 *f*

190 *rall. agitato rall.*

195 *ff*

200 *tr* *mp* *tr* **Courante** *p* *lento, esitando*

206 *accel.* *mf p* *mf p* *mf p* *mf p* *mf* *p* *mf*

212 *a tempo* *p* *mf* *p* *mf* *p* *mf*

217

221

225

229

234

239

243

246

250

mp

254

p f p f p f

258

p f p fp fp pp

263

lento poco a poco accel.

267

f p f p pp

271

a tempo fp f

275

allarg. p

Sarabande

280

pp mf

285

mp pp mf mp

290

p

293

gliss.

ten.

ten.

p

298

ten.

ten.

gliss.

f

pp sub.

303

mf

307

Gavotte I

pp *lento, esitando*

accel.

312

f in tempo

318

mp

mf

323

p

f

329

f

335 *mf* // Gavotte II

341

347 *ppp* distant bagpipe

353 *mf*

359

364 *ppp mf* *f* Gavotte I DC

371

376 *mp*

382 *mf* *p* *f* *allarg.*

388 *ff sostenuto*

394 *allarg.* **Gigue** ♩=84 *f*

400 *p tip* *f*

406

410

415 *p f sub.*

420

424 *p*

428 *con sentimento*

433

mf *pp* *mf* *plaintive*

439

pp *mf* *giocoso*

442

mf

446

ff

451

mf

455

mf

459

ff

463

ff