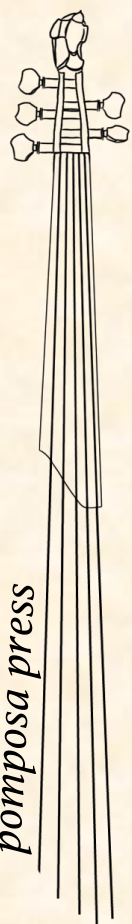


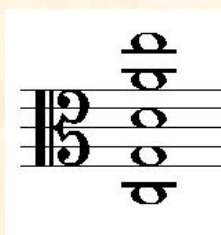
**J.S. BACH**

**SUITE II, BWV 1008**

**TRANSCRIBED FOR  
5-STRING VIOLA BY  
RUDOLF HAKEN**



*pomposa press*



©2017 Pomposa Press

# Prélude

*pp* first pos. *p* *mf* *f* *pp* *mf*

5 *ten.* *ten.*

9 *p* *mp* *ten.*

13 *f* 4 1 *ten.* 4 2

17 0 4 1 0 3 1 0

21 *ff* 0 4 3 4 3 *p*

25 4 1 3 0 *pp* 0 2 3 1 1 *mp* 1-1 2 4 0 *mf*

29 0 2 3 1 1 2 2 *f* *ff* *ten.*

33 *mf* *ten.* *f* *ten.* *ten.* *rit.*

36 *ff* *p* 0 3 0 *ten.*

39 *ten.* *f*

42 *ff* *mf* *ff*

45

49 *pp*

52

54 *ppp* *mp* *mf*

57 *f*

60 *allarg.*

63 *ppp*

# Allemande

64 *cantabile* *mf* *grazioso* *cantabile*

67

70

72

74

77

80

82

85

88 Courante ♩=112

Staff 88-91: Bass clef, 3/4 time signature. Measure 88 starts with a treble clef and a sharp sign. Measure 91 has a *V* marking above the staff.

Staff 92-95: Bass clef. Measure 92 has *V* markings above the staff. Measure 95 has a *p* dynamic marking and a triplet of eighth notes with fingerings 3 0 3 0.

Staff 96-98: Treble clef. Measure 96 has a 4-measure rest. Measure 97 has a 4-measure rest and a 1 0 fingering. Measure 98 has a 0 fingering and a *ten.* marking.

Staff 99-102: Treble clef. Measure 99 has a 0 fingering and a *pp* dynamic marking. Measure 100 has a 3-measure rest. Measure 101 has a 1 fingering.

Staff 103-106: Treble clef. Measure 103 has a double bar line. Measure 104 has a 3-measure rest. Measure 105 has a 0 3 0 1 fingering.

Staff 107-110: Treble clef. Measure 107 has a *V* marking above the staff. Measure 108 has a *V* marking above the staff. Measure 110 has a double bar line.

Staff 111-113: Bass clef. Measure 111 has a 4-measure rest. Measure 112 has a 4 3 2 fingering. Measure 113 has a *p* dynamic marking.

Staff 114-115: Treble clef. Measure 114 has a *f* dynamic marking. Measure 115 has a 0 fingering.

Staff 116-117: Treble clef. Measure 116 has a 1 // 3 0 1 fingering and a *pp* dynamic marking. Measure 117 has a 0 fingering and a double bar line.

Staff 118-119: Treble clef. Measure 118 has a 4 // 3 fingering. Measure 119 has a double bar line.

# Sarabande

120

126

132

137

142

145

# 148 Minuet I

156

163

tr tr V 3

170

**Minuet II**

tr tr V

176

3 4 4 0 V V tr V 1

183

189

V tr V

196 **Minuet I - DC**

4

204

V tr 0 2 0 3 3 1

211

tr tr V 3

218

**Gigue**

tr 0 4 1 4 3

228

tr

237

*espr.*

246

V

253

*p*

262

A 4 4 2 E

*tristamente*

269

*giocoso*

277

*rit.*

285

291