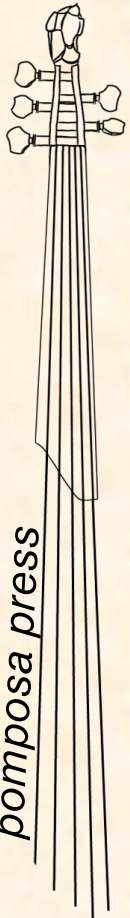


to Bill King

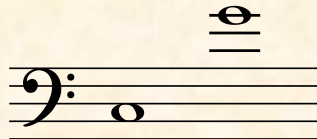
**RUDOLF
HAKEN**

**CONCERTO FOR
CLARINET,
ORCHESTRA, AND
STEEL PANS**



pomposa press

**CELLO STEEL PAN &
TRIANGLE**



I. Allegro moderato	measure 1	duration 9 min. 16 sec.
II. Andante	measure 249	duration 6 min. 9 sec.
III. Presto	measure 348	duration 8 min. 54 sec.

INSTRUMENTATION (35-piece orchestra including steel pans)

WOODWINDS

piccolo
 oboe
 clarinet in b-flat
 bass clarinet in b-flat
 soprano saxophone in b-flat
 contrabassoon

BRASS

horn in f
 trumpet in c
 trombone
 tuba

PERCUSSION

*5-octave marimba
 4 tom-toms / vibraphone / suspended cymbal
 steel band (6 musicians):
 lead steel pan 1
 lead steel pan 2 / snare drum
 double second steel pan 1
 double second steel pan 2
 cello steel pan / triangle
 bass steel pan / tam-tam

STRINGS

violin 1 (four players)
 violin 2 (four players)
 viola (four players)
 cello (four players)
 *6-string electric bass (one player)

*Alternative parts are available to substitute for unusual instruments:

5-octave marimba may be replaced by 4-octave marimba

6-string electric bass may be replaced by keyboard

RUDOLF HAKEN CONCERTO FOR CLARINET, ORCHESTRA, AND STEEL PANS
dedicated to Bill King

For several years this work remained a "concerto in search of a solo instrument." It was first performed as a trumpet concerto in 1996 with Paul Merkelo, principal trumpet of the Montreal Symphony, then recast as a concerto for soprano saxophone. Clarinetist Bill King recorded the work in its present form for Centaur Records, conducted by Julien Benichou.

Interestingly, this is not the first concerto to be recast for different solo instruments: Bach rewrote violin concertos for the harpsichord, Mozart transcribed his oboe concerto for the flute, and Beethoven published a piano version of his violin concerto.

Another aspect of composition is finding the ideal location to compose. There are times when a noisy, disruptive environment is particularly inspiring. Mozart wrote his famous trio for clarinet, viola, and piano in a bowling alley. Similarly, I wrote much of this concerto during a lengthy Greyhound bus journey, actually choosing to travel slowly by bus in order to give me time and repose for writing.

I have had a long-standing interest in incorporating steel pans into orchestral music. This union of vastly different timbres and musical styles has provided wonderful compositional opportunities.

The first movement of this concerto is a tribute to Johann Sebastian Bach. Although the music sounds nothing like Bach, it is based on four notes that spell his name. (In German notation, B-A-C-H is equivalent to B flat-A-C-B). This motif is first stated by the clarinet alone, followed by the lead steel pan. The electric bass then creates a twelve-tone ostinato by presenting "BACH" in three different tonalities. This serves as the basis for a calypso rhapsody played by the steel band. The clarinet and orchestra join in numerous variations on "BACH," which take on the character of group jazz improvisation, replete with quotations from major works. After a clarinet cadenza, the opening calypso theme returns, played by the full orchestra. A solo tuba ritornello leads into the lyrical second movement.

The slow movement is based on an "ACH" motif, that is to say, "B-A-C-H" minus the first note. Vibraphone and marimba accompany the solo clarinet in an expressive, melancholy tune, which is answered in solos by several members of the orchestra.

The finale then opens with a "CH" motif, which is of course the second half of the "BACH" motif. From this develops a raucous tune in triple meter, which alternates throughout the movement with an expansive, lyrical melody. The concerto culminates in a bombastic climax, featuring an epic battle between these two themes.

cello steelpan / triangle

(Note: Triangle is not played until meas. 369)

Tempo ad lib. (♩=ca.92)

Allegro Moderato (♩=112)

sol^o clarinet
All cues are in concert pitch.

steelpan

electric bass

cues

pans

10 steelpans

pans

mf

14

pans

f

18

pans

22

pans

mf *f*

26

pans

30
pans

ff

34
pans

38
pans

ff

41
pans

46
pans

ff

50
pans

ff

54
pans

solo clarinet
f

59
pans

gong
solo clarinet

63

pans

68

pans

orch.

f

76

pans

solo clar. orch. clar. orch.

83

pans

clar. orch. clar. orch. clar.

86

pans

sax, marimba clar.

p

91

pans

94

pans

strings

98

pans

gong solo clarinet

oboe, sax

tpt, hn

103

pans

107

pans

in tempo

electric bass

110

pans

orch. clar. & violas

sax & violins

solo clarinet

115
pans

118
pans

121
pans

125
pans

129
pans

134
pans

138
pans

141
pans

146

pans

153

pans

158

pans

162

pans

166

pans

169

pans

175

electric bass
Tempo Primo (♩=112)

solo clar.

pans

179

pans

pp

183

pans

pp < *p*

186

pans

p

190

mba
solo clarinet

pans

p

195

pans

p

198
pans
f ff

203
pans
tr tr tr tr tr
ff ff f orch.

209
pans

213
pans
ff fff

217
pans
fff

221
pans
allargando
tuba cadenza

226
pans

237

pans

241

pans

246

pans

vib/mrba solo clarinet
II. Andante (♩=52)

253

pans

260

pans

steelpans
rit. a tempo

p

266

pans

270

pans

poco rit. solo clarinet
Moderato (♩=72)

f

274 trumpet

trumpet

pan

p

279

rit. solo clarinet oboe

pan

284

poco rit. vib/mba solo clar. **Andante** (♩=52)

pan

289

pan

293

woodwinds *poco rit.* solo clarinet **Allegretto** (♩=126)

pan

300

poco rit. *a tempo*

pan

308

piccolo *poco accel.* sax

pan

315

allarg.

vib/mba solo clarinet

Andantino (♩=58)

4/4 3/4

pans

321

poco rit.

4/4

pans

326

piccolo

Moderato (♩=72)

rit.

4/4

pans

330

solo clarinet

sax

Andante (♩=52) **Moderato** (♩=60)

3/4 4/4

pans

335

piccolo

bass clarinet

trumpet solo clarinet

rit. **poco meno mosso**

4/4 3/4

pans

341

el. bass

allarg. **f**

4/4 3/4

pans

348

solo clarinet

III. Solo - lento

Presto (♩=156)

3/4

pan:

353

orch.

1 2 3 4 5 6

f > > > > > >

pan:

360

solo clarinet

change to triangle

f

pan:

366

orch.

TRIANGLE

p

trgl.:

372

change to pans

solo clarinet

PANS

f

pan:

378

change to triangle

pan:

383

woodwinds

pic. & vln. 1

TRIANGLE

p

trgl.:

woodwinds

389

pic. & vln. 1

tr. tr. solo clarinet

trgl.

p

396

tr. tr.

tr. tr.

tr. tr.

tr. tr.

trgl.

402

tr. tr.

tr.

tr.

tr.

bass clar., tuba

trgl.

411

tr.

tr.

solo clarinet

snare drum

Tempo ad lib.

rall.

trgl.

418

solo clarinet

Andante (♩=52)

trgl.

425

trgl.

433

horn

viola

trgl.

442 *morendo*
 trgl. ctbsn

449 *allarg.*
 trgl. solo clarinet
Presto (♩=156)
 orch.

456

462
 trgl. solo clarinet
 TRIANGLE
pp

469
 trgl. strings WW (TRIANGLE) strings
p

475
 trgl. WW strings change to pans solo clarinet
p

482
 pans piccolo

488

trgl.

493

trgl.

allarg. oboe

piccolo

solo clarinet

Andante (♩=56)

PANS

allarg.

p

499

trgl.

trumpet

change to triangle

507

trgl.

solo clarinet

Presto (♩=156)

514

trgl.

519

trgl.

GP orch.

526

trgl.

solo clarinet

TRIANGLE

change to pans

f

532

orch.

solo clarinet

pan

539

brass

solo clarinet

pan

546

orch. clarinet

solo clarinet

violas & cellos

pan

552

tmbn, bass clar.

oboe

solo clarinet

strings

pan

561

solo clarinet

rit.

violins, violas

Half tempo (♩=78)

pan

567

woodwinds

pan

574

brass

solo clarinet

poco a poco stringendo
(increase tempo gradually to Presto)

tr tr

pan

580

pans

586

pans

violins

solo clarinet

PANS

Presto (♩=156)

ff

594

pans

599

pans

orch.

clar.

604

pans

orch.

Largo molto sostenuto (♩=48)

ff grandioso

609

pans

614

pan

619

pan

molto allargando

solo clarinet

Presto giocoso (♩=156)

626

pan

orch.

633

pan

solo clarinet

orch.

640

pan

solo clarinet

f *ff*

650

pan

G.P. solo clarinet

ff